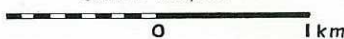


# NANGA

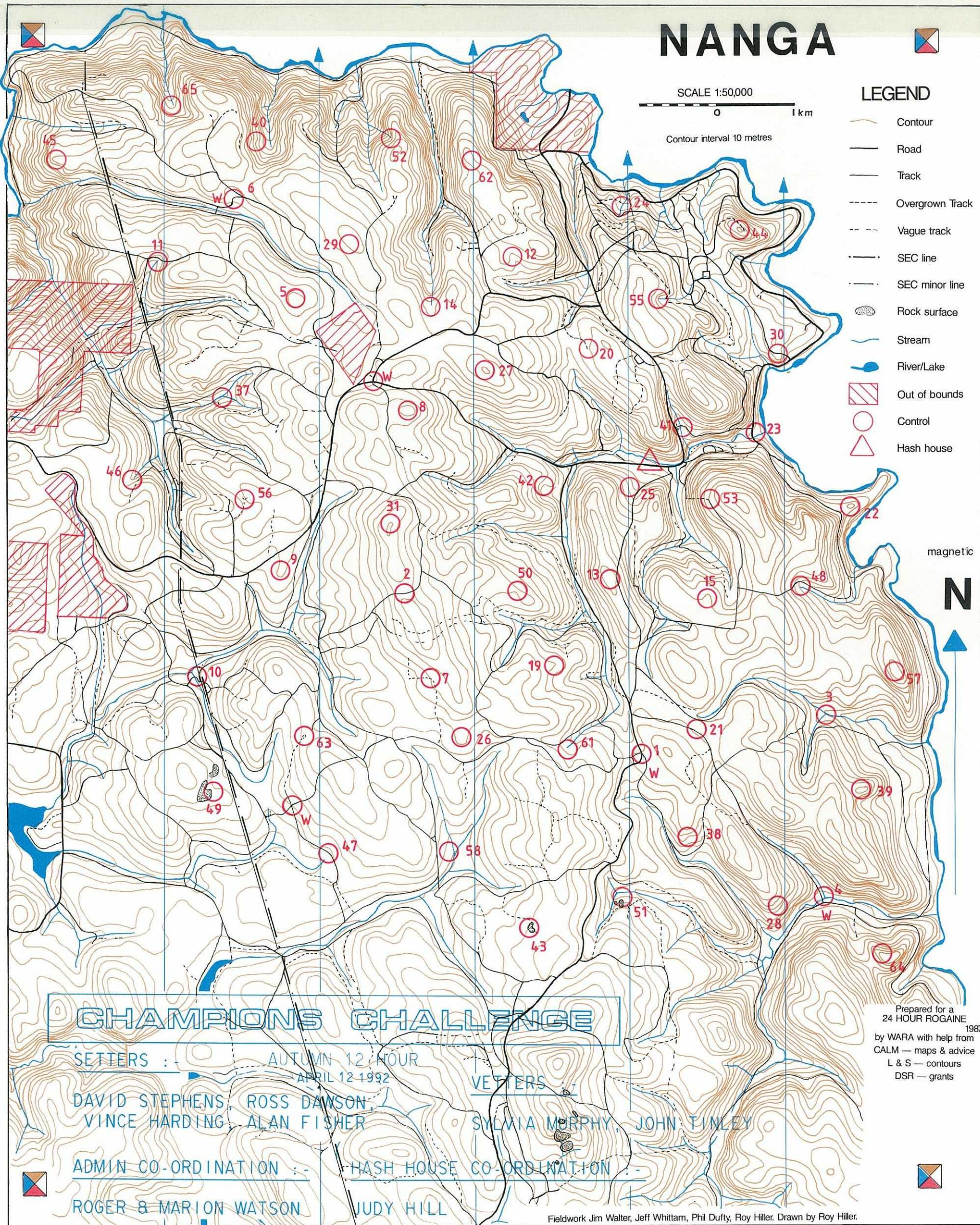
SCALE 1:50,000



Contour interval 10 metres

## LEGEND

- Contour
- Road
- Track
- Overgrown Track
- Vague track
- SEC line
- SEC minor line
- Rock surface
- Stream
- River/Lake
- Out of bounds
- Control
- Hash house



magnetic

# N



## CHAMPIONS CHALLENGE

SETTERS : DAVID STEPHENS, VINCE HARDING  
 AUTUMN 12 HOUR APRIL 12 1992

ROSS DAWSON, ALAN FISHER

VETTERS : SYLVIA MURPHY, JOHN TIMLEY

ADMIN CO-ORDINATION : ROGER & MARION WATSON

HASH HOUSE CO-ORDINATION : JUDY HILL

Prepared for a 24 HOUR ROGAINE 1987  
 by WARA with help from CALM — maps & advice  
 L & S — contours  
 DSR — grants



CHAMPIONS' CHALLENGE NANGA April 1992

Number	Description	Points	Number	Description	Points
	Track junction - WATER	20	37	Creek junction - sound of rapids	60
	Saddle on the track	20	38	Head of the gully	60
	Creek junction	20	39	The summit	60
	Road/creek crossing - 10m at 10 degrees - drinkable water in creek	20	40	Foot of northern rock surface	60
	Rocky clearing	20	41	10 metres SE of creek/track crossing	60
	S-bend in track - WATER	20	42	Head of the gully	60
	Corner of indistinct track	30	43	On top of rock	70
	The summit	30	44	The summit	70
	On the Spur	30	45	The spur	70
	Bend in minor track	30	46	Head of watercourse	70
	Head of creek	30	47	West of creek/ track crossing	70
	Head of broad gully	30	48	Head of the creek	70
	The summit	30			
	Head of the creek	30	49	A minor watercourse junction	80
	The spur	30	50	The neck	80
			51	Among the boys guarding minor watercourse	80
	The spur	40	52	Head of the creek	80
	Clearing 10 x 10 at end of indistinct track	40	53	Corner fence post	80
	Shallow disused railway cutting	40			
	The summit	40	55	Head of minor watercourse	90
	70 metres at 30 degree from waterfall, amongst the blackberries	40	56	North side of clearing	90
	South junction of creek and minor watercourse	40	57	The summit	90
			58	Dead tree - SE corner of large clearing, 100m X 100m	90
	Big log blocking indistinct track	50			
	The spur	50	61	Head of the creek - southern side	100
	The summit	50	62	Narrow neck	100
	King Jarrah, then 25 m @ 330 degrees	50	63	On top of the pile of logs (end of overgrown track)	100
	The broad summit	50	64	The spur	100
	Blazed tree	50	65	A creek junction	100
	The summit north end	50			